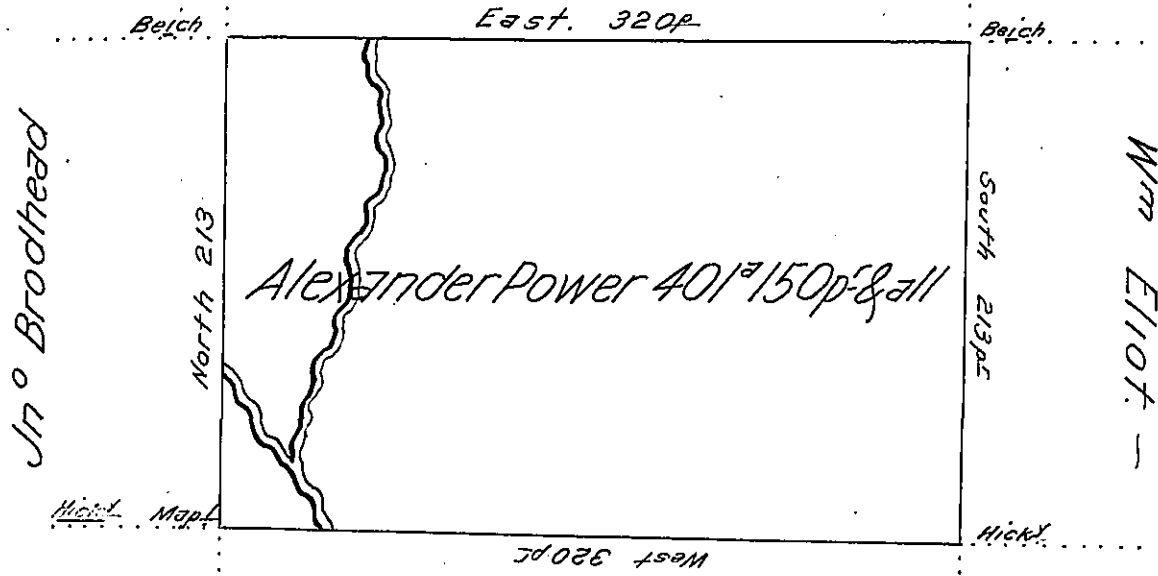


James Thomson



District Line

Situate on the West side of ~~Aleghen~~ French Creek, in Allegheny County containing 401^{1/2} and 150p^r & All^{ce} of Six ^{1/2} Cent for Roads &^e Surveyed the 3^d day of November 1794 Inpursuance of his Improvement dated as above ~

W^m Power D^{YS}r

To Dan^l Brodhead Esq^r }
 Surveyor General }

IN TESTIMONY that the above is a copy of the original remaining on file in the Department of Internal Affairs of Pennsylvania, made conformably to an Act of Assembly approved the 16th day of February, 1833, I have hereunto set my Hand and caused the Seal of said Department to be affixed at Harrisburg, this twelfth day of June 1906.

Geo. R. Hoover
 Secretary of Internal Affairs.